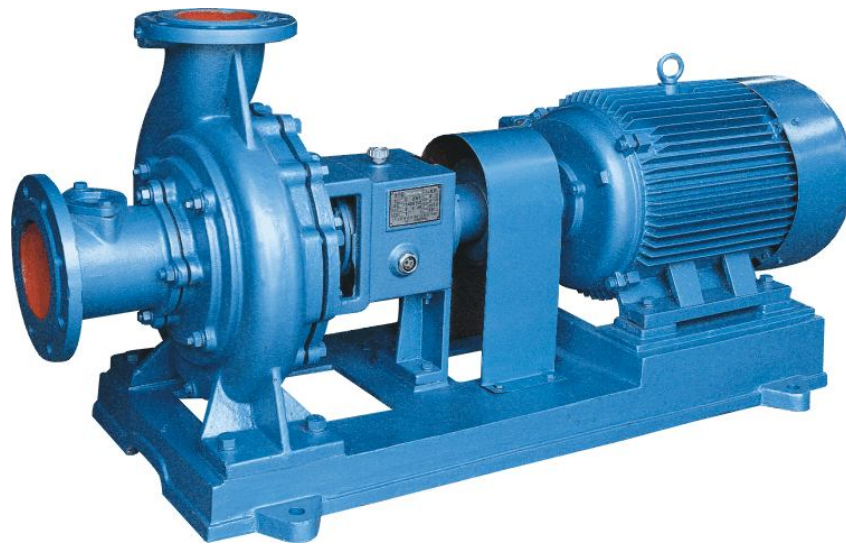


Type SJ Pulp Pump



SJ Impeller



General

Pump Type SJ is a new model Pulp Pump, designed on the basis of pulp's feeding through liquid, solid and gas. Developed by advance technique, suitable for the severe condition of the pulp making and paper making trade. It has not only wide performance range and small intervals between parameters, but also takes. So it can save energy and increase the capacity of the pump, which delay its using life.

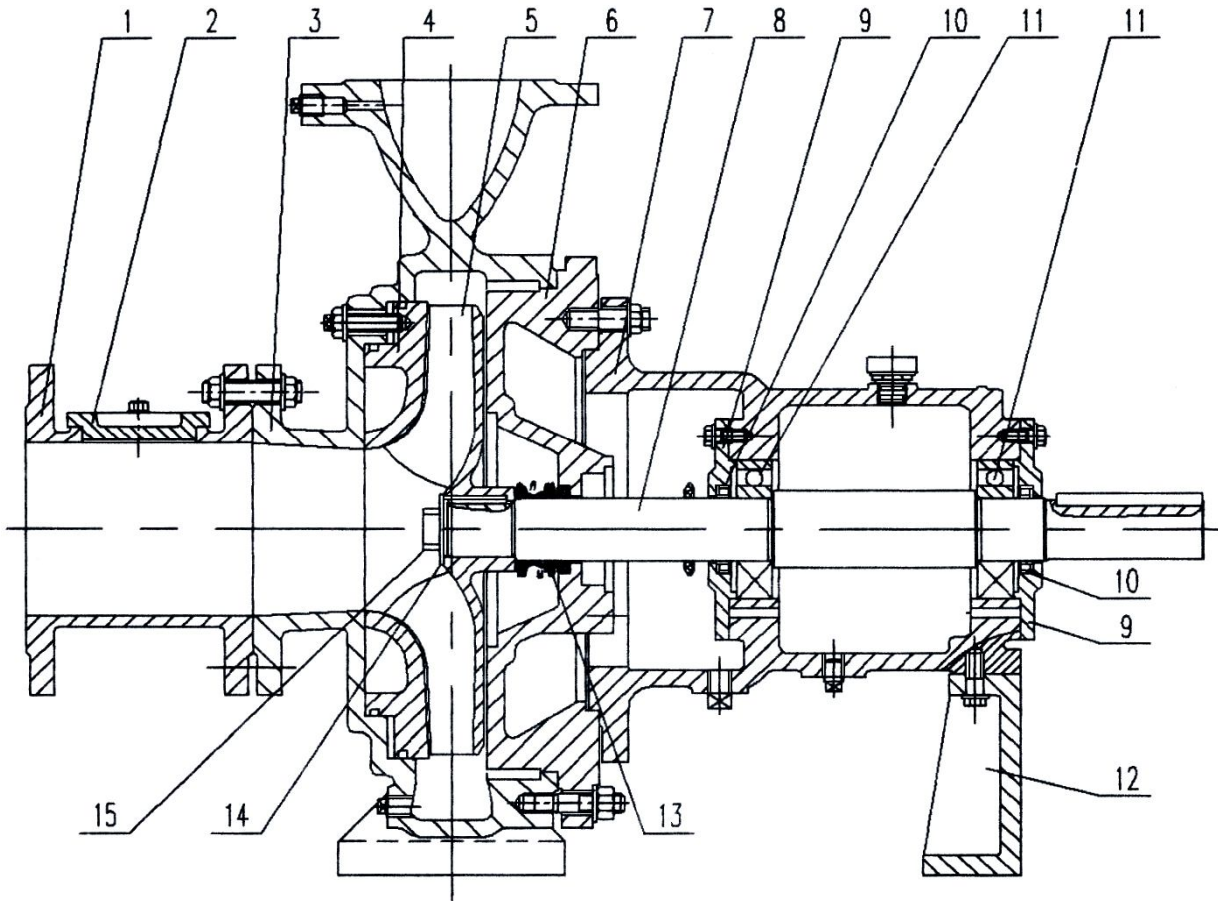
Performance Range

Capacity: 20 ~ 1600 m³/h
Head: 8 ~ 50m
Pulp Density: ≤5%
Working Temperature: ≤100° C



DRAKOS - POLEMIS INC
PUMP MANUFACTURERS

Configuration of Pump (Mechanical Seal)



Item	Spare part	Pcs.	Item	Spare part	Pcs.
1	Fish dirt pipe	1	9	Bearing cover	2
2	Dirt hole cover	1	10	Skeleton oil seal	2
3	Casing	1	11	Bearing	2
4	Wearable boarding	1	12	Support	1
5	Impeller	1	13	Mechanical seal	1
6	Casing cover	1	14	Brake washer	1
7	Bearing housing	1	15	Impeller nut	1
8	Shaft	1			



DRAKOS - POLEMIS INC
PUMP MANUFACTURERS