

2/2 General Purpose

AD31 Series , Piston Pilot Operated , Normally Closed

- Characteristic :**
1. Pilot operated piston construction with lower power consumption
 2. Seal serves longtime at steam ambient;
 3. Used for long-time working in pipeline system.

Medium : Steam, Hot Water, Oil, etc.

Temperature: PTFE: -20°C ~ 200°C

VITON: -10°C ~ 120°C

Pressure: 0.05 ~ 1.60MPa

Body: Brass or Stainless Steel SUS304

Port Size: 3/8" , 1/2" , 3/4" , 1" , 1 1/4" , 1 1/2" , 2"

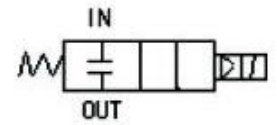
Port Thread: BSPP , BSPT , NPT , Flange, UNF

Orifice (mm): DN 15, 20, 25, 32, 40, 50, 25F, 32F, 40F, 50F

Voltage: DC: 12V, 24V

AC: 220/230V, 110/120V, 24V (50/60HZ)

Coils : S21H, 22VA(AC), 15W(DC), IP65, 100%ED



Material:

Body - Stainless steel

Seal - PTFE or VITON

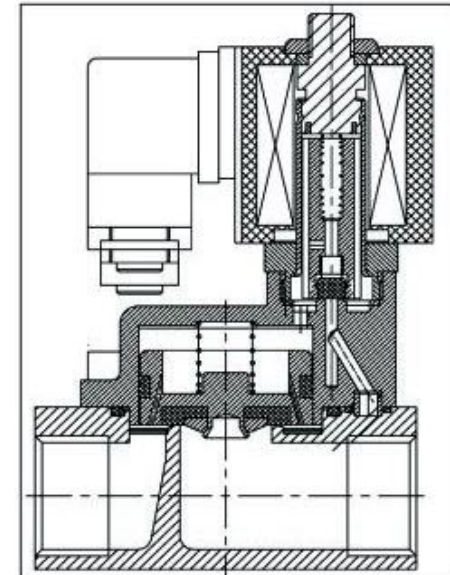
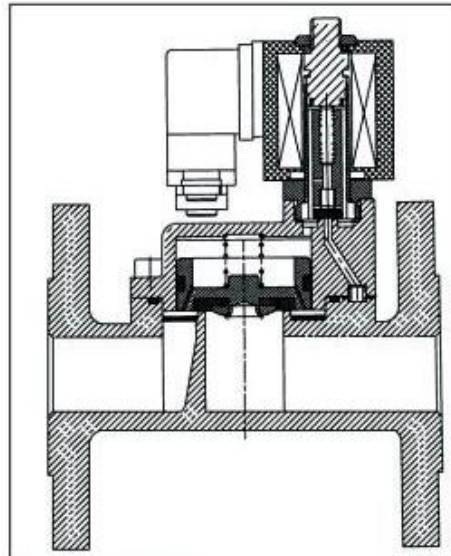
Armature Tube - Stainless Steel 304

Plunger - Stainless Steel 430F

Stop - SS430F

Springs - SS 304

Shading Rings - Stainless Steel 304



AD31 Series, Normally Closed, with Coil S21H, (1.60MPa)

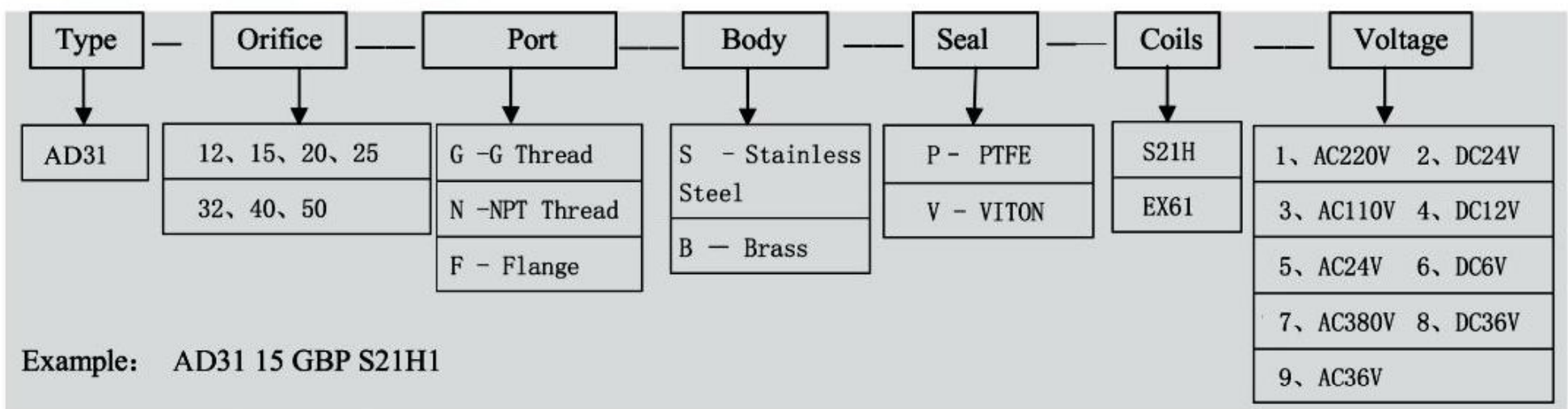
Port Size	Orifice	Cv	Min Pressure	Max Pressure		Seals Material	Body Material	Valve Body	Coil
				AC(22VA)	DC(15W)				
3/8"	15	4.5	0.05MPa	1.60MPa	1.60MPa	PTFE or VITON	Brass or Stainless Steel	AD3112 X X X	S21H
1/2"	15	4.5	0.05MPa	1.60MPa	1.60MPa			AD3115 X X X	S21H
3/4"	20	9.3	0.05MPa	1.60MPa	1.60MPa			AD3120 X X X	S21H
1"	25	12	0.05MPa	1.60MPa	1.60MPa			AD3125 X X X	S21H
1 1/4"	32	24	0.05MPa	1.60MPa	1.60MPa			AD3132 X X X	S21H
1 1/2"	40	29	0.05MPa	1.60MPa	1.60MPa			AD3140 X X X	S21H
2"	50	48	0.05MPa	1.60MPa	1.60MPa			AD3150 X X X	S21H

Sole Agent
SAFEWAY MARKETING PTE LTD
 35 Kallang Pudding Road
 Blk A #02-12, Tong Lee Building
 Singapore 349314
 Tel: 65-67442277 / Fax: 65-67445706
 Email: safeway_mkg@yahoo.com.sg
 Website: www.safewaymarketing.sg

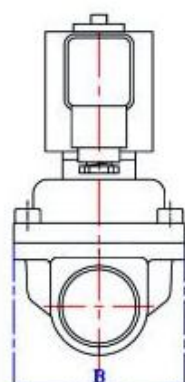
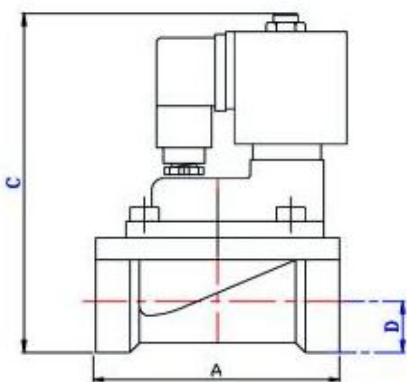
AD31 Series, Normally Closed, with Coil S21H, (1.60MPa)

Port Size	Orifice	Cv	Min Pressure	Max Pressure		Seal Material	Body Material	Valve Body	Coil
				AC(22VA)	DC(15W)				
F1"	25	12	0.05MPa	1.60MPa	1.60MPa	PTFE, VITON	Brass or Stainless steel	AD3125F X X	S21H
F1 1/4"	32	24	0.05MPa	1.60MPa	1.60MPa			AD3132F X X	S21H
F1 1/2"	40	29	0.05MPa	1.60MPa	1.60MPa			AD3140F X X	S21H
F2"	50	48	0.05MPa	1.60MPa	1.60MPa			AD3150F X X	S21H

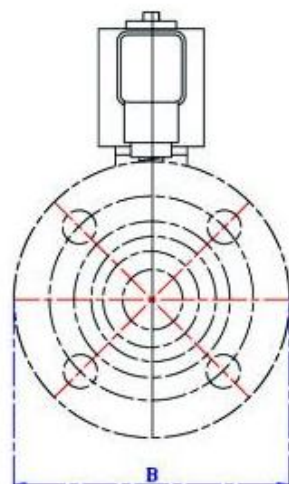
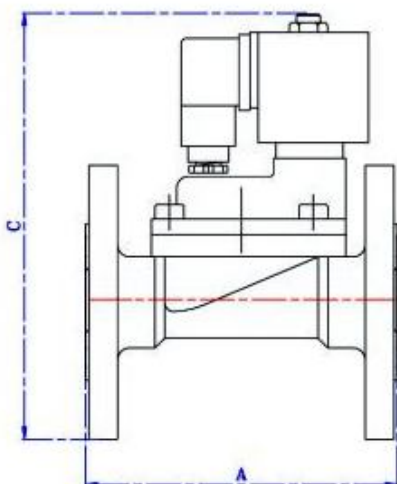
Determine Valve Body Code



Dimension



Body	AD3112 XXX	AD3115 XXX	AD3120 XXX	AD3125 XXX	AD3132 XXX	AD3140 XXX	AD3150 XXX
A	75	75	83	100	130	130	155
B	50	50	60	70	96	96	122
C	140	140	146	156	140	140	149
D	15	15	17	21	28	28	34



Body	AD3125F XX	AD3132F XX	AD3140F XX	AD3150F XX
A	130	160	160	190
B	115	140	150	165
C	175	187	187	200