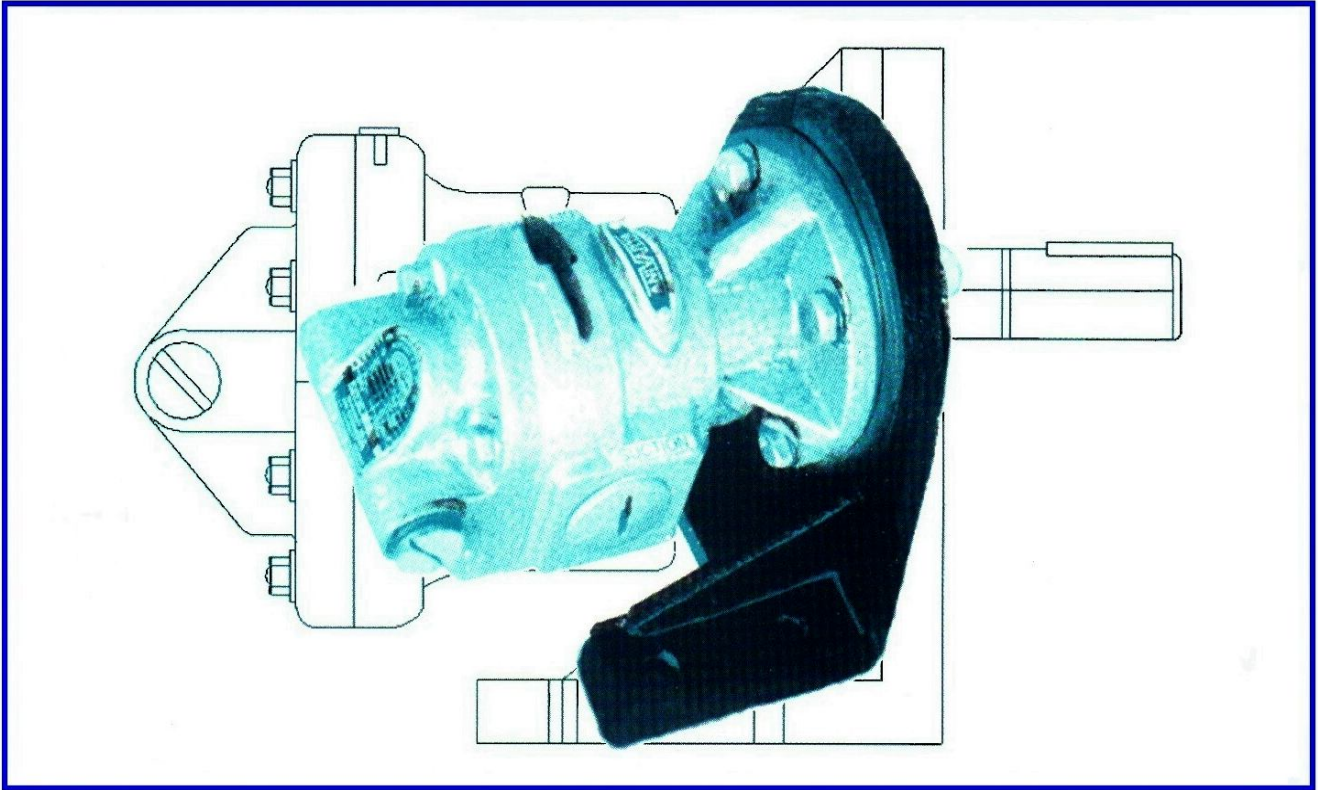


DRAKOS

ROTARY GEAR PUMPS



TYPE SGX

Flange Mounted

- ▶ Simple
 - ▶ Silent
 - ▶ Compact
 - ▶ Efficient
 - ▶ Economical
- ▶ Reliable for transfer of
 - Viscouse & Semiviscouse liquids like LDO, FO, HSD, Lubricating Oils etc.
 - ▶ Compact & highly useful for standardising on
 - Centralised Lubricating Systems
 - Pumping & Heating System
 - Oil Filtration & Cleaning System
 - Transformer Oil Purification System
 - ▶ Wide Capacity Range
 - ▶ Optionally converted to foot type with the help of L Type bracket which matches with the frame of electric motor.



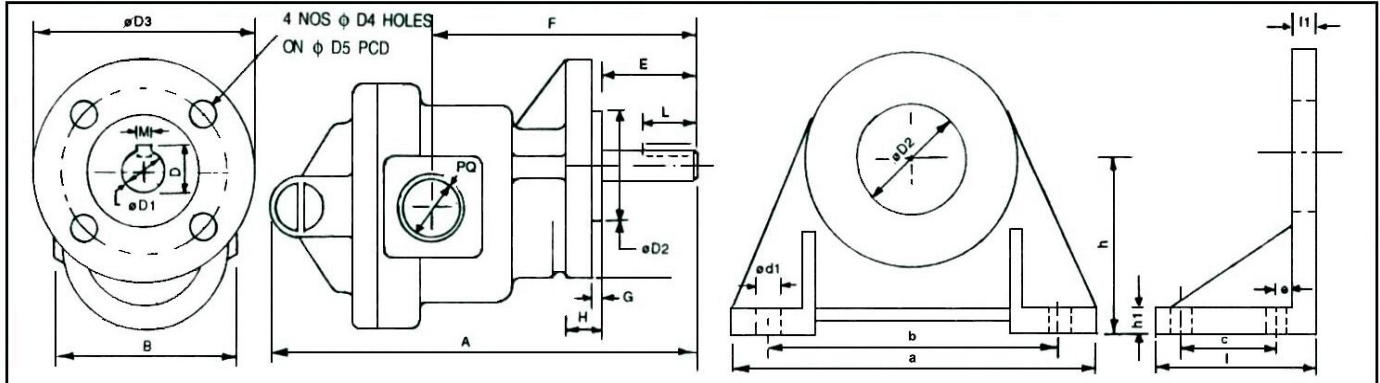
DRAKOS - POLEMIS S.A.
PUMP MANUFACTURERS

Kryoneri - Athens - Greece

H. P. CHART

PUMP MODEL	INLET OUTLET SIZE	CAPACITY AT 1500 RPM			RECOMENDED MOTOR HP AT DIFFERENTIAL PRESSURE OF 'X' kg / cm2 with 1500 SSU VISCOSITY										WT. OF BARE SHAFT PUMP IN KG
		LPM	US GPM	M3/hr	'X' 1	2	3	5	6	7	8	9	10	12	
SGX-025	1/4" X 1/4"	2.5	0.65	0.15	0.25										1.7
		5	1.3	0.3	0.25					0.5					
SGX-050	1/2" X 1/2"	10	2.65	0.6	0.25		0.5					0.75			2.3
		15	4	0.9	0.5					0.75					
SGX-075	3/4" X 3/4"	20	5.3	1.2	0.5			0.75				1		4	
		25	6.65	1.5	0.5			0.75				1			
SGX-100	1" X 1"	35	9.3	2.1	0.5			0.75			1			5	
		50	13.3	3	0.75		1			1.5		2			
SGX-125	1 1/4" X 1 1/4"	60	16	3.6	0.75		1	1.5		2		3		7.7	
		75	20	4.5	1	1.5		2		3					
SGX-150	1 1/2" X 1 1/2"	100	26.6	6	1	1.5	2		3			5		9	
		125	33.3	7.5	1.5	2	3			5					
SGX-200	2" X 2"	150	40	9	2	3	5			7.5			16.5		
		200	53.3	12	3			5		7.5				10	
SGX-250	2 1/2" X 2 1/2"	300	80	18	5		7.5		10		12.5		15	26	
		350	93.3	21	5		7.5		10		12.5		15		
SGX-300	3" X 3"	415	110	25	7.5			10		12.5		15		35	
		500	132.5	33.3	7.5		10	12.5		15					

DIMENSION OF PUMP & BRACKET



Model	A	B	D	$\phi D1$	$\phi D3$	$\phi D4$	$\phi D5$	E	F	G	H	L	M	$\phi D2$	PQ	a	b	c	$\phi d1$	e	h	h1	l	l1
SGX-025	130	64	11	9.5	72	6.5	59	30	74	2	8	18	3	45	1/4" BSP	126	100	35	8	13	63	10	73	12
SGX-050	158	70	13.5	12	80	8	65	36	88	2	9	22	4	50	1/2" BSP	138	112	40	8	13	71	12	80	13
SGX-075	175	80	16	14	90	8	73	45	91.5	2.5	10	25	5	55	3/4" BSP	153	125	45	10	16	80	12	90	13
SGX-100	200	86	19	17	100	9.5	80	55	124	3	10	27.5	5	60	1" BSP	153	125	45	10	15	80	12	90	15
SGX-125	225	100	22.5	20	110	9.5	90	65	139	3	12	32	6	70	1 1/4" BSP	180	150	50	12	17	90	15	100	17
SGX-150	255	108	24.5	22	120	11.5	98	75	165	3	12	35	6	75	1 1/2" BSP	190	160	65	12	18	100	15	120	18
SGX-200	320	142	28	25	135	13.5	110	102	210	3	15	40	8	85	2" BSP	230	190	80	15	16	112	15	130	18
SGX-250	380	160	31	28	150	13.5	125	110	250	3	15	45	8	100	2 1/2" BSP	256	216	110	17	19	132	18	170	22
SGX-300	425	170	33	30	175	17.5	143	120	275	3	17	50	8	110	3" BSP	306	260	135	19	22	160	20	200	22

CROSS SECTION	MATERIAL OF CONSTRUCTION	PERFORMANCE CURVES
	Casing : CI Gr-20 Covers : CI Gr-20 Shafts : EN-9 H&G Gears : EN-8 Shaftseal : Oil seal Bearing : Bronze bush bearing Plug : Brass	<p>The graph plots three performance metrics against pressure (0 to 12 KG/CM²). The top curve represents % Efficiency, which starts at approximately 100% at 0 pressure and decreases to about 90% at 12 KG/CM². The middle curve represents % Power Con., starting at 0% and increasing to about 70% at 12 KG/CM². The bottom curve represents % Capacity, starting at 0% and increasing to about 100% at 12 KG/CM².</p>



DRAKOS - POLEMIS S.A.
PUMP MANUFACTURERS
 Kryoneri - Athens - Greece