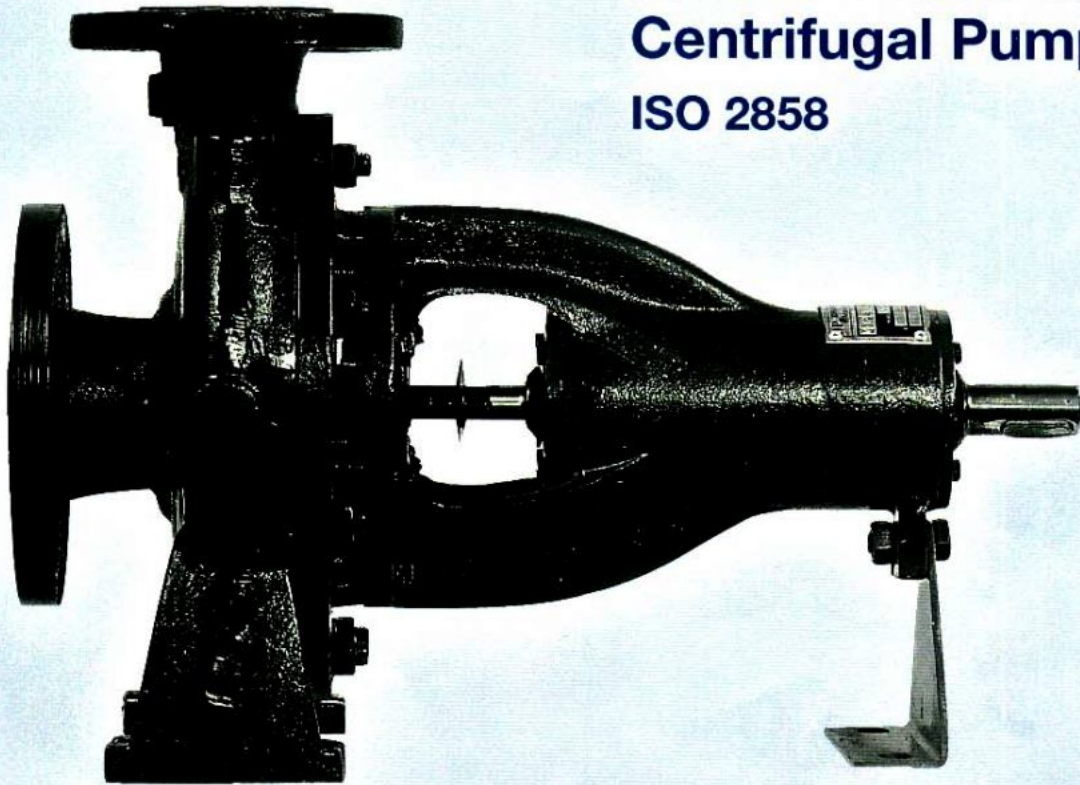


TYPE MDPL

Centrifugal Pump

ISO 2858



Applications

- For clean or turbid liquids, free from large solids.
- For pumping water, petrol, benzene, oil, brine, alkaline solutions and mild acids.
- For circulation, irrigation and drainage purposes.
- For water supply and booster stations.
- For industrial and agricultural applications and in public services.

Hydraulic Data

- Capacity up to 570 m³/h
- Head up to 160m
- Temperature up to 105°C for form 0
- Temperature up to 140°C for form 1 and form 2
- Working pressure 16 bar

Design

Single-stage end suction volute design with vertically arranged radial discharge branch. Single entry, closed impeller. Heavy duty ball bearings with two seals, "grease lubricated-for-life" in sturdily constructed housing flanged to pump casing.

Maintenance is very much easier, the impeller shaft and other rotating parts being removeable with no need to disconnect the suction or delivery pipes.

In fact the use of one extension coupling enables a pump to be dismantled without moving either the driver or the pump casing.

Maximum interchangeability of components. Identical parts can be used with various sizes of pumps, which greatly simplifies and reduces stock of spare parts.



DRAKOS - POLEMIS INC
PUMP MANUFACTURERS

SPECIFICATIONS

Stuffing box

Pumps are supplied as standard with a conventional packed gland.
Lantern ring water sealing and lubrication of packing.

Water cooled stuffing box for temperature above 105°C (form 1).
For special purposes, use of mechanical seals (form 2) and wearing rings.

Pumps can also be available in totally stainless steel 1.4408 castings with 1.4401 shaft.

Material

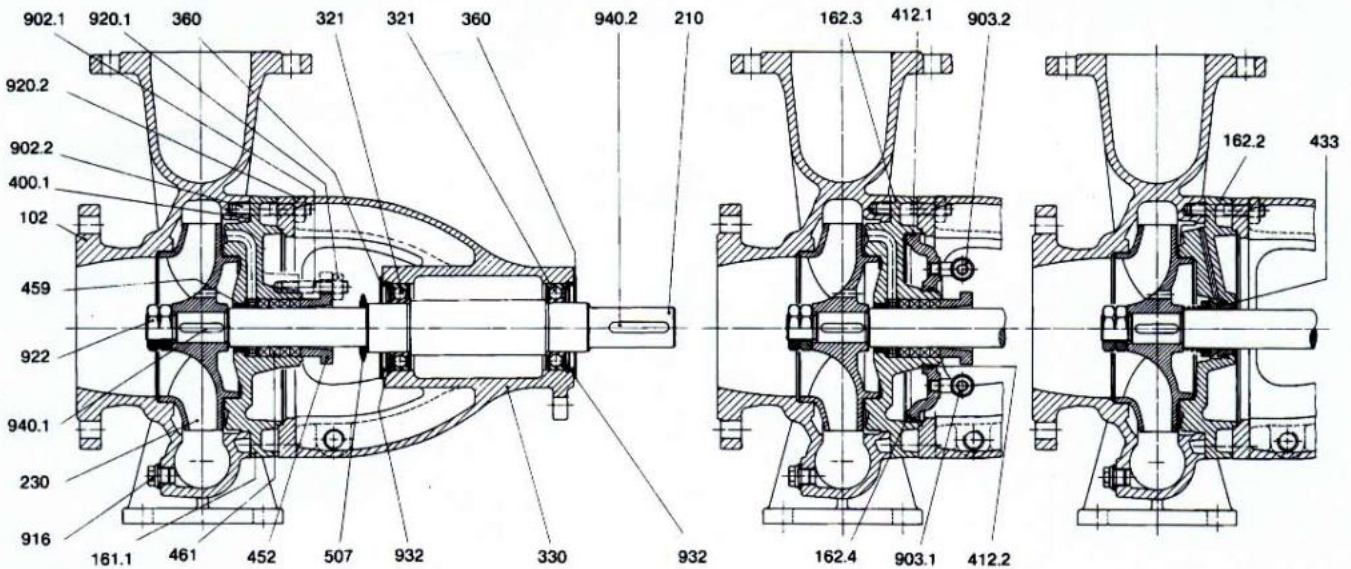
Standard design:

Casing	Cast-iron
Impeller	Cast-iron
Shaft	Steel

Special design:

Casing	Bronze
Impeller	Bronze
Wearing rings	Bronze
Shaft	Corrosion resistant steel

SECTIONAL VIEW



Form 0

Form 1

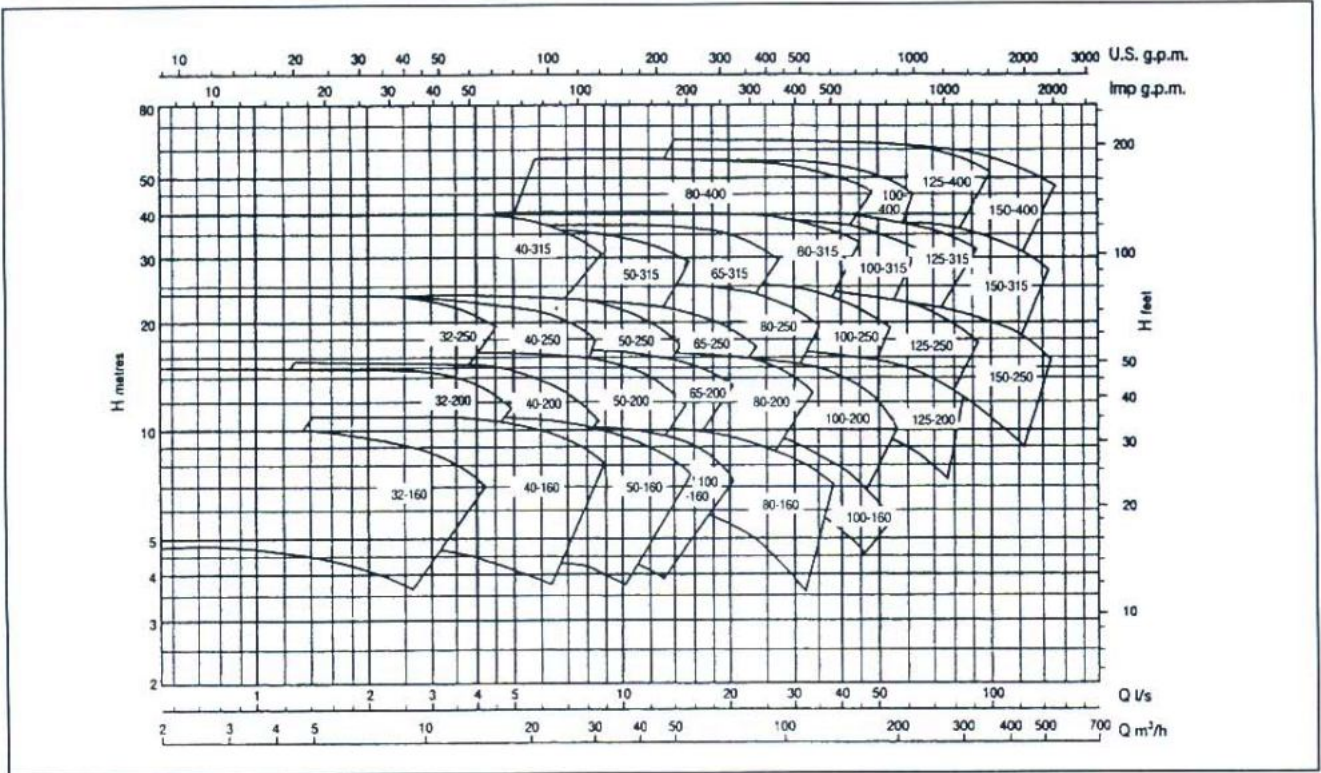
Form 2

Europump Number	Part Name	Europump Number	Part Name
102	Casing	461	Stuffing box packing
161.1	Casing cover	459	Stuffing box bushing
162.2	Casing cover for mechanical seal	433	Mechanical seal complete
162.3	Water cooled casing cover	400.1	Gasket for casing cover
162.4	Cover for cooling water	412.1	O-Ring for cover
210	Shaft	412.2	O-Ring for cover
230	Closed impeller	916	Drain plug
507	Deflector	932	Retaining rings for bores
922	Impeller nut	903.1	Cooling water pipe inlet
321	Anti-friction bearing, drive side	903.2	Cooling water pipe outlet
322	Anti-friction bearing, pump side	902.1	Gland stud
330	Bearing bracket	902.2	Stud for casing
360	Bearing cover, drive side	920.1	Gland stud nut
360	Bearing cover, pump side	920.2	Nut for casing
452	Stuffing box gland	940.1	Key for impeller
		940.2	Key for coupling

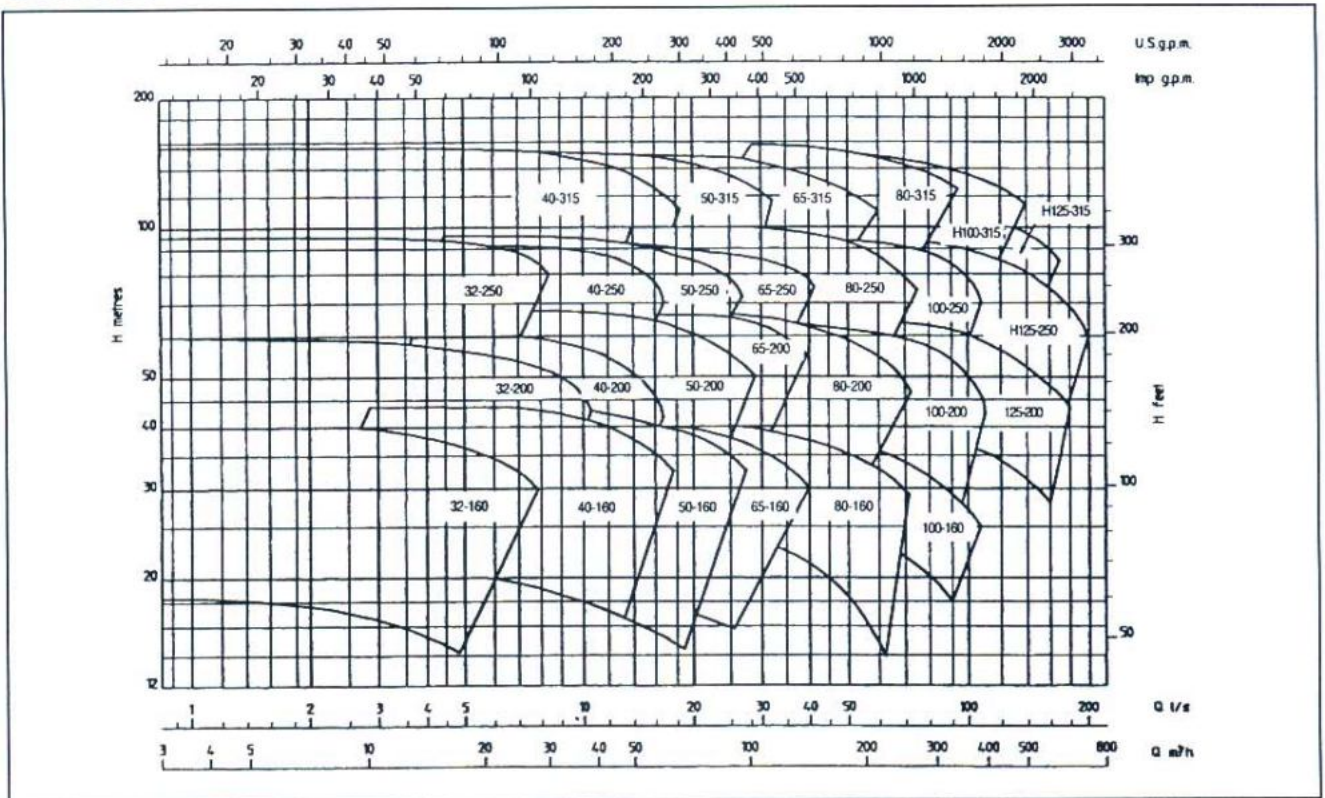


SELECTION CHART

Selection Chart 1450 RPM

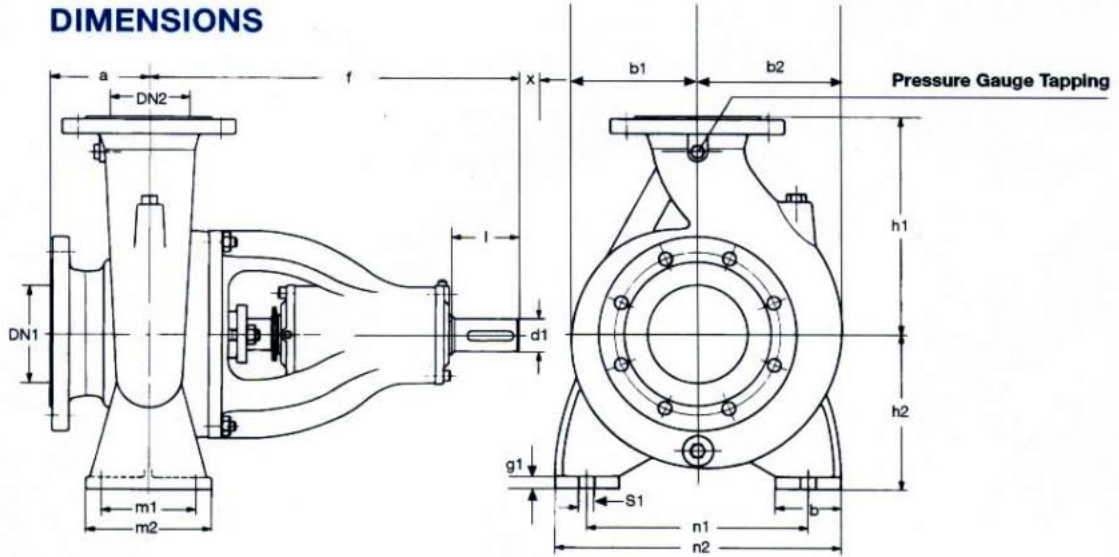


Selection Chart 2900 RPM



DRAKOS - POLEMIS INC
PUMP MANUFACTURERS

DIMENSIONS



DIMENSIONS (mm)

PUMP SIZE	FLANGE		PUMP DIMENSIONS						FOOT							SHAFT END			WT	
	DN1	DN2	a	f	h1	h2	b1	b2	b	g1	i1	m1	m2	n1	n2	s1	d	l	x	kg
32-160	50	32	80	385	132	160	111	120	50	15	38	100	70	240	190	14	24	50	100	34
32-200	50	32	80	385	160	180	125	135	50	15	38	100	70	240	190	14	24	50	100	44
32-250	50	32	100	500	180	225	162	171	65	18	33	125	95	320	250	14	32	80	100	68
40-160	65	40	80	385	132	160	114	128	50	15	38	100	70	240	190	14	24	50	100	38
40-200	65	40	100	385	160	180	135	148	50	15	38	100	70	265	212	14	24	50	100	49
40-250	65	40	100	500	180	225	163	174	65	18	33	125	95	320	250	14	32	80	100	73
40-315	65	40	125	500	200	250	189	199	65	18	33	125	95	345	280	14	32	80	100	104
50-160	80	50	100	385	160	180	124	144	50	15	38	100	70	265	212	14	24	50	100	42
50-200	80	50	100	385	160	200	143	161	50	15	38	100	70	265	212	14	24	50	100	47
50-250	80	50	125	500	180	225	165	181	65	18	33	125	95	320	250	14	32	80	100	72
50-315	80	50	125	500	225	280	197	212	65	18	33	125	95	345	280	14	32	80	100	108
65-160	100	65	100	500	160	200	127	155	65	18	33	125	95	280	212	14	32	80	100	70
65-200	100	65	100	500	180	225	151	174	65	18	33	125	95	320	250	14	32	80	100	81
65-250	100	65	125	500	200	250	177	197	80	19	33	160	120	360	280	18	32	80	140	89
65-315	100	65	125	530	225	280	206	226	80	19	32	160	120	400	315	18	42	110	140	126
80-160	125	100	125	500	180	225	134	170	65	18	33	125	95	320	250	14	32	80	140	89
80-200	125	100	125	500	180	250	154	183	65	18	33	125	95	345	280	14	32	80	140	92
80-250	125	100	125	500	225	280	181	206	80	19	33	160	120	400	315	18	32	80	140	106
80-315	125	100	125	530	250	315	217	241	80	19	32	160	120	400	315	18	42	110	140	123
80-400	125	100	125	530	280	355	255	278	80	20	32	160	120	435	355	18	42	110	140	162
100-160	125	100	125	500	200	280	176	222	80	19	33	160	120	360	280	18	32	80	140	105
100-200	125	100	125	500	200	280	168	207	80	18	33	160	120	360	280	18	32	80	140	108
100-250	125	100	140	530	225	280	183	214	80	20	32	160	120	400	315	18	42	110	140	132
100-315	125	100	140	530	250	315	223	252	80	19	32	160	120	400	315	18	42	110	140	142
100-400	125	100	140	530	280	355	254	282	100	20	32	200	150	500	400	22	42	110	140	178
125-200	150	125	140	530	250	315	181	235	80	20	32	160	120	400	315	18	42	110	140	136
125-250	150	125	140	530	250	355	223	271	80	18	32	160	120	400	315	18	42	110	140	157
125-315	150	125	140	530	280	355	231	271	100	20	32	200	150	500	400	22	42	110	140	156
125-400	150	125	140	530	315	400	275	307	100	20	32	200	150	500	400	22	42	110	140	193
150-250	200	150	160	530	280	375	228	302	100	20	32	200	150	500	400	22	42	110	180	192
150-315	200	150	160	670	315	400	253	301	100	20	32	200	150	550	450	22	48	110	180	254
150-400	200	150	160	670	315	450	284	326	100	20	32	200	150	550	450	22	48	110	180	280
H100-315	125	100	140	530	250	315	223	252	80	18	32	160	120	400	315	18	42	110	140	142
H100-400	125	100	140	530	280	355	254	282	100	20	32	200	150	500	400	22	42	110	140	178
H125-250	150	125	140	530	250	355	223	271	80	18	32	160	120	400	315	18	42	110	140	157
H125-315	150	125	140	530	280	355	231	271	100	20	32	200	150	500	400	22	42	110	140	156
H125-400	150	125	140	530	315	400	275	307	100	20	32	200	150	500	400	22	42	110	140	193

The technical data of this leaflet are subject to change without notice.
Back pull-out distance required between motor shaft end and pump shaft.



DRAKOS - POLEMIS INC
PUMP MANUFACTURERS

PLANT & HEAD OFFICE

Kryoneri - Attiki
Tel.: ++ 30(1) 81 61 402
Fax: ++ 30(1) 81 61 262
Post Address: P.O. Box 51024
GR-145 Kifissia, Athens Greece.