

# 2 WAY SOLENOID VALVES

# NCD

## Normally Open Solenoid Valve For Fluid: Water, Air, Gas & Oil

# AMAX

## AD16-10~50

### SPECIFICATION:

1. 2 Way Normally Open Solenoid Valve.
2. Cast Stainless Steel or Brass Body.
3. Pilot-kick Diaphragm Type.
4. Installation: Can Be Installed Any Position But The Level Condition To Keep Coil Upside Is The Best For Long Life.
5. Standard Voltage : AC 110V / 220V (50/60 Hz). Other Voltage of AC or DC is Available When Required.
6. Weather Proof Coil IP65, Class F.
7. ISO Standard.
8. Diaphragm Material: EPDM



### FEATURES:

1. Small Volume, High Flow, Little Electric Power Required.
2. Water Proof Coil Available When Required.
3. Coil Is Design To Turn In Free Direction.

### UNSUITABLE FLUID:

1. Viscosity Over 50CST.
2. Liquid When Heated, Solid When Cool.

### CAUTION:

1. Pipe Must Be Washed Neat And Clean Before Fitting.
2. A Steam Strainer Or Filter Has To Be Installed One Meter Away From The Solenoid Valve.

MODEL	CONNECTION SIZE	ORIFICE (mm)	CV	FLUID TEMP.	WATER	AIR	GAS	OIL	NET WEIGHT	GROSS WEIGHT
AD16-10	3/8"	13	4.5	0-90°C	0.03-1.0 (MPa)	0.03-1.0 (MPa)	0.03-1.0 (MPa)	0.03-1.0 (MPa)	0.56	0.61
AD16-15	1/2"	15	4.5	"	"	"	"	"	0.59	0.64
AD16-20	3/4"	20	9.3	"	"	"	"	"	1.05	1.13
AD16-25	1"	25	12	"	"	"	"	"	1.11	1.19
AD16-35	1-1/4"	32	24	"	"	"	"	"	3.12	3.16
AD16-40	1-1/2"	40	29	"	"	"	"	"	2.87	2.91
AD16-50	2"	50	48	"	"	"	"	"	4.26	4.31

MODEL	POWER			CLASS OF INSULATION	COIL COLOUR			REMARKS
	AC (VA)		DC (WATT)		AC110	AC220	DC TYPE	
	50 HZ	60HZ						
				CLASS F				COIL IS WEATHER PROOF TYPE. WATER PROOF COIL IS AVAILABLE ON REQUEST.
AD16-10	14	14	16	"	BLACK	BLACK	BLACK	"
AD16-15	"	"	"	"	"	"	"	"
AD16-20	"	"	"	"	"	"	"	"
AD16-25	"	"	"	"	"	"	"	"
AD16-35	"	"	"	"	"	"	"	"
AD16-40	"	"	"	"	"	"	"	"
AD16-50	"	"	"	"	"	"	"	"

### SOLE AGENT:

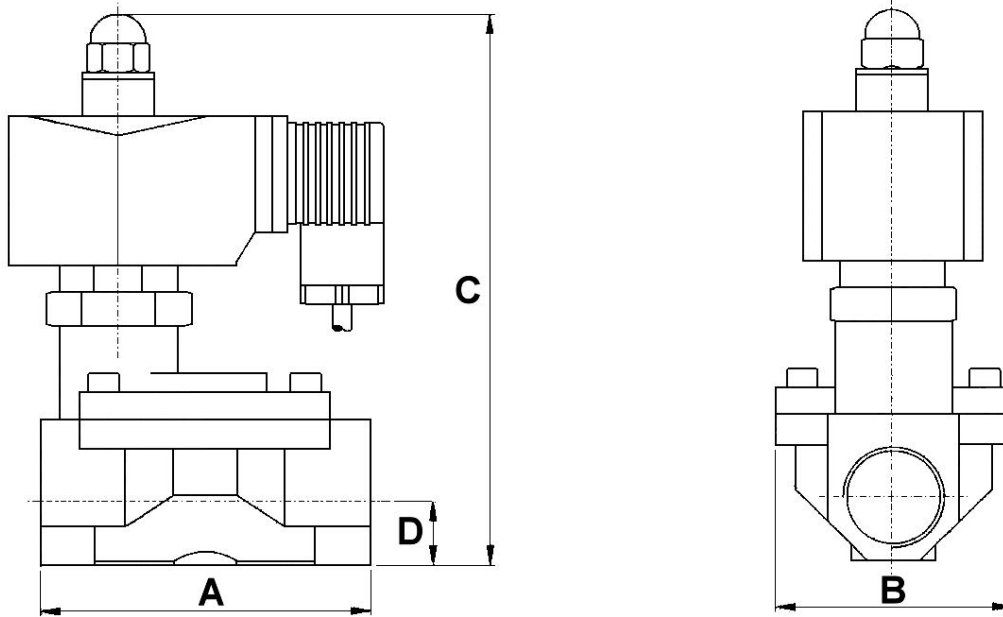
## SAFEWAY MARKETING PTE LTD

35 Kallang Pudding Road, Blk A #02-12, Tong Lee Building

Singapore 349314

Tel: (65) 67442277 / Fax: (65) 67445706

## DIMENSIONS

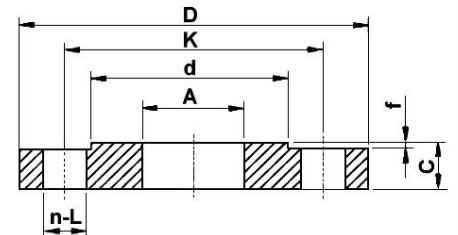


## DIMENSIONS

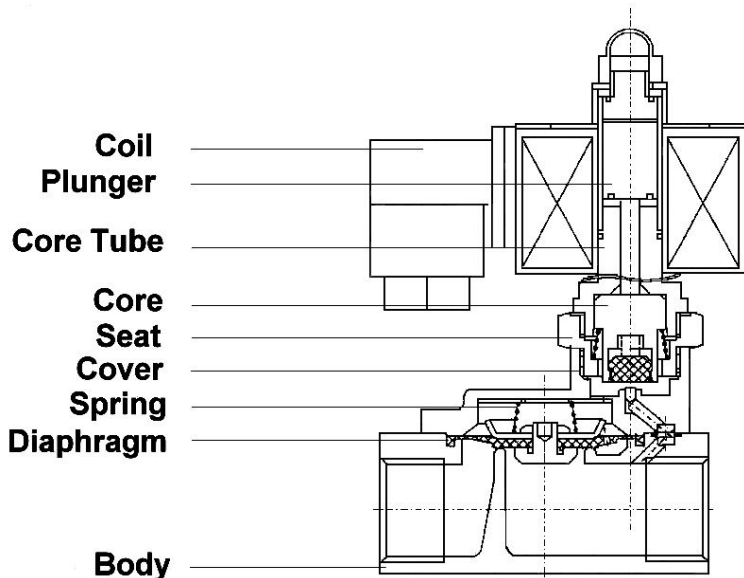
TYPE	R	A	B	C	D
	BSP				
AD16-10	3/8"	73	48	93	13.5
AD16-15	1/2"	73	48	93	13.5
AD16-20	3/4"	83	60	104	16.5
AD16-25	1"	100	70	116	21
AD16-35	1-1/4"	130	92	130	28.5
AD16-40	1-1/2"	130	92	130	28.5
AD16-50	2"	156	113	145	34

## FLANGE CONNECTION DIMENSIONS

Dia.	Pressure 1.6PN (MPa)								
	DN	D	K	L	n	d	C	f	A
20	105	75	16	4	56	16	2	26.9	
25	115	85	16	4	65	16	3	33.7	
32	140	100	18	4	76	18	3	42.4	
40	150	110	18	4	84	18	3	48.3	
50	165	125	18	4	99	20	3	60.3	
65	185	145	16	4	118	20	3	76.1	
80	200	160	18	8	132	20	3	88.9	
100	220	180	18	8	156	22	3	114.3	
125	250	210	18	8	184	22	3	139.7	
150	285	245	22	8	211	24	3	168.3	



## INTERNAL STRUCTURE



## MATERIAL OF MAJOR PARTS

ITEMS	PART NAME	MATERIAL
1	COIL	Copper Wire
2	PLUNGER	Stainless steel
3	CORE & CORE TUBE	Stainless steel
4	SEAT	Stainless Steel or Brass
5	COVER	Stainless Steel or Brass
6	SPRING	Stainless Steel
7	DIAPHRAGM	EPDM
8	BODY	Cast Stainless Steel or Brass